

Frequently Asked Questions - Officials ASBK Round 2 – COVID-Safe Plan

Version 1
29 June 2020

General Info

- All Officials are reminded that the current COVID-19 environment changes quickly and all in the ASBK paddock should understand that changes and adjustment may occur planning which are outside of ASBK control.
- Volunteer officials required Saturday and Sunday, unless otherwise specified
- There is NO Friday Practice Day for ASBK Round 2 – Phillip Island.
- The paddock will be split into four (4) coloured zones.
- There will be no spectators for ASBK Round 2 – Phillip Island 25-26 July 2020.

Registration

- All officials are required to register for the event and provide their name, phone number and email address for contact tracing.
- If you are a member of Hartwell MCC, please contact Shane White on shanewhiteccjmc@gmail.com to register
- If you are a member of RMV or would like to register as a flag marshal or track marshal, please contact Chris Cameron from RMV on chris.cameron@live.com.au
- Unfortunately, officials will not be accepted on the day
- All officials will be required to collect a credential from Gate 2 prior to entering the circuit
- All officials are strongly encouraged to download the COVIDSafe App
- Please cooperate with all new regulations and adhere to requests from security, ASBK Staff and Officials and Phillip Island Circuit Staff. Any breach of the COVID-Safe restrictions may result in a sporting penalty and/or fines and penalties by government law enforcement.

Officials Benefits

- ASBK Officials T-Shirt
- Lunch
- ASBK Pre-COVID Program
- ASBK Raffle Prizes
- As there will be no spectators for ASBK Round 2 – Phillip Island 25-26 July 2020, officials will not receive 2 x additional tickets for a friend. We apologise for the inconvenience.

At the Track

- All persons entering the circuit will need to collect their accreditation at Gate 2 on Friday or Saturday morning before entry will be granted. To collect accreditation each person will need to: show ID, complete the required disclaimer, and receive a temperature check, if requested. Social Distancing is required at the Gate 2 office during this process.
- All vehicles entering the circuit are subject to security checks being conducted, please plan accordingly for your time entering the track, as this process is expected to be slower than usual.
- Social distancing of 1.5m will be in place in the Officials Muster and during the Officials Briefing

Frequently Asked Questions - Officials

ASBK Round 2 – COVID-Safe Plan

Version 1
29 June 2020

- There will be no official lunch break as under the new COVID-Safe regulations it is required to avoid mass gatherings at the canteen at any time.
- The plan is to have the officials rotate out for bathroom and lunch breaks
- Equipment will be cleaned at the end of the day; however, we request each official to utilise the same flag/comms set each day.

What to Bring

- Masks and disposable gloves will be provided, but are not mandatory
- Hand Sanitiser will be provided
- Please bring your own pen for sign on
- If you own non-disposable/work gloves, please bring them

COVID-Safe Requirements

The following are required to be adhered by all persons entering the circuit for ASBK:

Good Hygiene

- Officials must provide Hand Hygiene products to all team member under their control.
- Avoid sharing equipment or tools, and all equipment should be cleaned after use.
- Sharing of helmets and Rider Safety Apparel is strictly prohibited.
- No shared food, No cooking onsite, and No group catering services.
- Frequently touched surfaces, work areas and equipment are to be thoroughly cleaned on a regular basis.

Social Distancing

- Maintain social distancing measures of 1.5m between people.
- In accordance with the Sports Australia principles of *'Get in, play sport and get out'*, all competitors, crew and officials should come to the event prepared and once activities have finished, pack up and leave each day.
- No mass gatherings including riders/competitor briefings will occur.
- The rider briefing will take place via pre-recorded video messages, any additional briefings will be conducted via the PA system.
- The circuit and ASBK will put in place practical measures to enforce social distancing requirements, including the provision of signage and creating walkway barriers and/or markings that restrict the amount of people in any given area. All personnel must adhere to these instructions.
- Avoid unnecessary physical interaction between officials, competitors, media and other personnel. Wherever possible electronic interaction will be used.
- Essential buildings such as Race Secretary Office and Race Control, will have signage that clearly indicates the maximum number of people allowed. Within each room appropriate spacing must comply with social distancing requirements following the 1 person per 4m² rule.
- Race Direction will be a highly restricted room and no entry is permitted by Riders, Crew or Entrants.

Restrictions

Under **NO** circumstances should anyone with symptoms consistent with COVID-19 attend the event or travel.

This includes any,

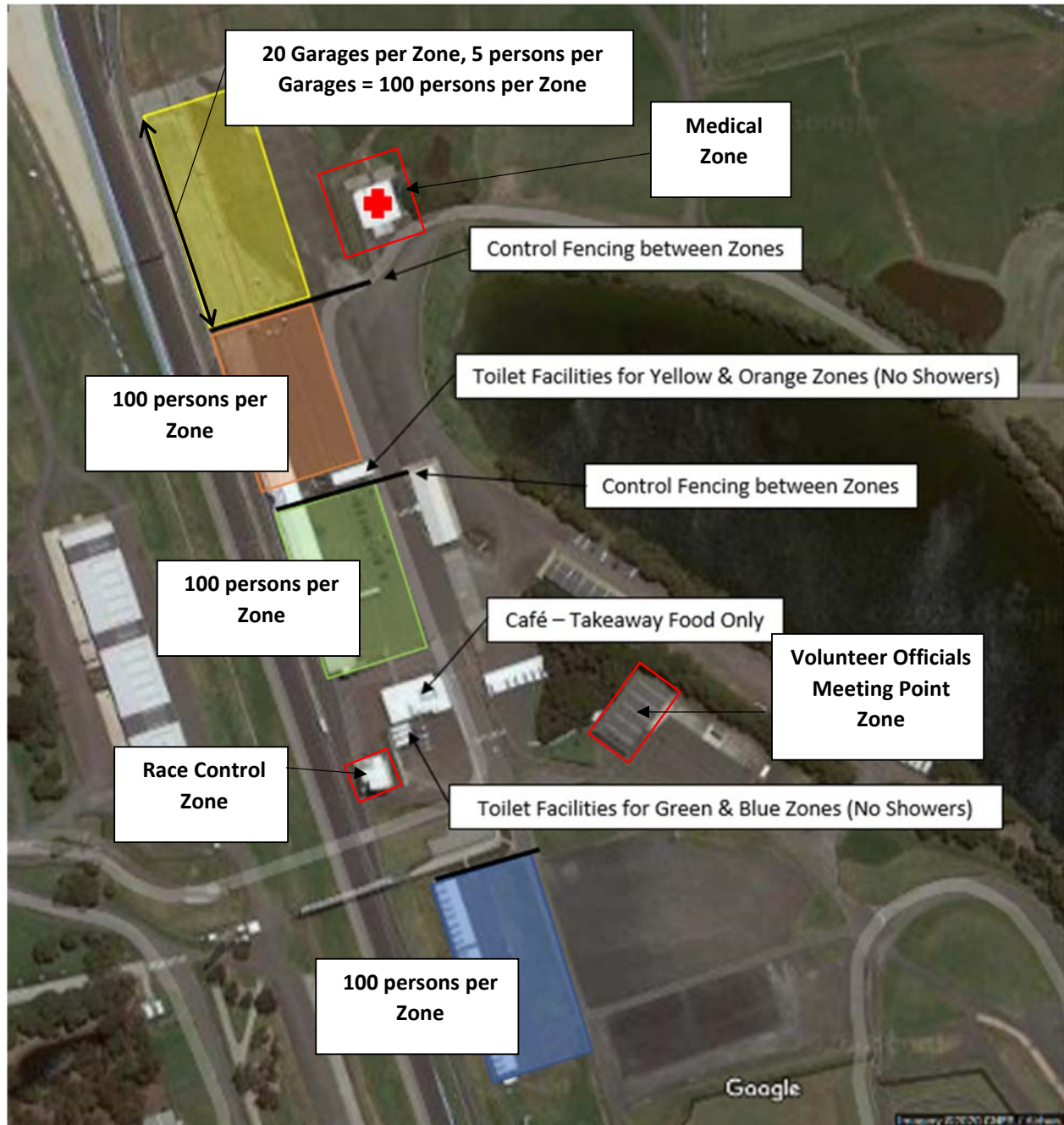
- fever
- respiratory symptoms
- shortness of breath
- sore throat
- cough
- fatigue
- lack of sense of smell

Under **NO** circumstances should anyone attend or travel to the event if they have been,

- overseas in the previous 14 days
- in contact with someone who has been overseas in the previous 14 days
- in contact with a known COVID-19 positive case in the previous 14 days
- within the last 14 days, have been unwell (including any respiratory symptoms)

Paddock Layout

- There will be four (4) separate Control Zones (Colour Coded) within the Paddock Area to control the number of personnel working in each area and to also minimise the sharing of toilets and other facilities.



Team Travel

Each competitor will be permitted a limited number of personnel. The competitor + personnel will create a small group for travel logistics as a “**Team**”.

ASBK Teams are responsible for their own travel arrangements. No overseas competitors are planned to attend the event at this time.

Each Team is responsible for creating an individual travel plan, incorporating its members and aims to minimise contact with other people, while conducting the COVID-Safe principles as is practical.

This travel period must adhere to the principles of a COVID-Safe environment, including but not limited to,

- Use of Hand Hygiene products and washing of hands
- No shared food
- Personal Protective Equipment (PPE) should be worn where appropriate
- Frequently touched surfaces to be thoroughly cleaned on a regular basis.
- Maintain social distancing measures of 1.5m between people.

Each Team is responsible for creating an individual accommodation plan, incorporating its members, which minimises contact with other persons and is conducting in the safest COVID-Safe manner practical.

Any accommodation option must adhere to the principles of a COVID-Safe environment, including but not limited to,

- Frequently touched surfaces to be thoroughly cleaned on a regular basis.
- Use of Hand Hygiene products and washing of hands
- No shared food
- Personal Protective Equipment (PPE) should be worn where appropriate
- Maintain social distancing measures of 1.5m between people.

When attending shopping centres, supermarkets, or restaurants during the event period or whilst in transit, all Teams are encouraged to minimise interaction with other parties and minimise the time spent outside of their accommodation option. Teams must always maintain social distancing measures of 1.5m between people and adhere to the 4²m rule inside all buildings.

All Teams must approach their travel and accommodation under the principle of creating their own **Team Travel Bubble** for the period of the event, inclusive of the period of travel to and from the event.

If during the travel period of any Team, should any member of the Team become unwell or develop any COVID-19 symptoms, that team member should contact the nearest Doctor, Healthcare facility or Hospital to seek further testing and care. All other members of that Team should then immediately seek COVID-19 testing advise and self-isolate until receiving further instruction from an appropriate healthcare professional.

Under NO circumstances should any of the Team attempt to attend the racing circuit venue if they are unwell for any reason or assume that heading to the circuit Medical Centre should be an option for medical care in this situation.

Site Management and Security

- Site Management will be coordinated by the Racing Circuit Venue and their specific COVID-19 Safety Plan
- All personnel will be required to arrive at the circuit entering via Gate 2
- All personnel must first attend the Gate 2 Credentials Office (outside of the circuit) for completion of event accreditation, including any temperature screening (if required). Only personnel who are pre-registered by ASBK for the event (which is restricted to approved personnel) will be provided accreditation.
- Social Distancing Measures must be adhered to by all personnel arriving at this area
- Once accreditation has been obtained at Gate 2 Credentials Office, all personnel must travel to the Gate 7 Security Point which is controlled by circuit security personnel. Only personnel with event accreditation will be permitted to enter the venue.
- Once entering the venue, all personnel must travel via the tunnel, into the ASBK Paddock Area. Upon arrival into the ASBK paddock, Teams will be allocated to parking in restricted "Zones" as pre-allocated prior to the event. Their accreditation for the event will include a colour-coded wrist band which will clearly indicate their allocated Zone for their pit pox area and vehicle parking.

ASBK COVID-Safe Event Information

The following information details which controls would be introduced to reassure the recommencement of the ASBK Championship in a COVID-Safe environment.

Based on a restriction of 500 persons onsite -

- All riders and teams are strongly encouraged to download the COVIDSafe App before the event.
<https://www.health.gov.au/resources/apps-and-tools/coronavirus-australia-app>
- All personnel onsite MUST maintain social distancing of 1.5m in all areas.
- Hand hygiene facilities/products must be available at all toilet facilities and the food outlet.
- Hand hygiene facilities/products must be available at the entry and exit point of the venue and all the administration building.
- Riders and Teams are required to bring their own hand sanitiser, wipes, etc.
- No sharing of any bikes.
- No sharing of any equipment or tools.
- Competitors should wash hands before and after each activity and avoid touching their face.
- All personnel onsite will be educated on the COVIDsafe information and requirements prior to the event via email. Signage will also be provided at the venue entry and multiple other locations at the event.
- Personal protective equipment (PPE), hand sanitizer and wipes, should be available for staff and volunteer officials
- Regular cleaning of frequently touched surfaces provided by venue management
- No group gatherings, once riders have finished their activities then they should pack up and leave the racing circuit venue. Following the AIS principle of **"Get in, play sport and get out"**
- Prohibit non-essential personnel from entering the venue.
- Limit the number of officials and support crew that can enter the venue.

Frequently Asked Questions - Officials

ASBK Round 2 – COVID-Safe Plan

Version 1
29 June 2020

- Food catering outlets must operate according to government guidelines on social distancing, hygiene and maximum number of services allowed in an area.
- Takeaway Food only available from food outlet. Social Distancing must be respected at the food outlet
- No shared food
- No spectators allowed for Round 2
- Mark out spacing for areas where queueing needs to occur to create clear distancing between persons (1.5m). *(Supermarket principles)*
- No sharing of any rider safety apparel (helmets, gloves, boots, leather suits, etc.)
- Minimize and avoid use of indoor facilities where possible. All indoor facilities must have the maximum number people allowed in each room clearly marked with signage. The requirement of 1 person per 4m² must be adhered to.
- Buildings such as race control, media centre, medical centre etc, should have appropriate spacing of seats and signs indicating the maximum number of people allowed. The requirement of 1 person per 4m² must be adhered to.
- No group briefings for riders or officials. Use electronic or video briefings via email will be used.
- Competitor and officials to utilise self-printed forms where required and required to bring own pen. Pre-event education with the following materials via email and signage to be displayed at the venue.
- Podium presentations and Awards need to be in a controlled manner in accordance with government social distancing regulations of 1.5m separation. In the outdoor press conference style.
- Trophies to be displayed in the podium area and collected by athletes, and not presented by hand to hand passing or contact.
- Electronic payments only for transactions. Pre-purchase sales where possible.
- Under NO circumstances should ANYONE with symptoms consistent with COVID-19 attend the circuit. This includes any fever, respiratory symptoms, shortness of breath, sore throat, cough, lack of sense of smell or fatigue.
- Under NO circumstances should ANYONE who has been overseas in the previous 14 days or been in contact with a known COVID-19 positive person or person who has been overseas in the last 14 days, attend the circuit.
- If concerned, advice should be sought via the national coronavirus hotline 1800 020 080 (24/7)

**SHARE THE TRACK
NOT THE PEN**



**PLEASE BRING
YOUR OWN PEN**



**NO
HAND-
SHAKES
OR HUGS**

**TRY THE
"FOOT-
SHAKE"
INSTEAD**



**PROTECT
YOURSELF**



**PROTECT
OTHERS**

AND



WASH YOUR HANDS

OR

USE HAND SANITISER



PRACTICE RIDING

AND

**SOCIAL
DISTANCING**



**PLEASE KEEP A
MOTORCYCLE LENGTH
DISTANCE FROM OTHERS**

