



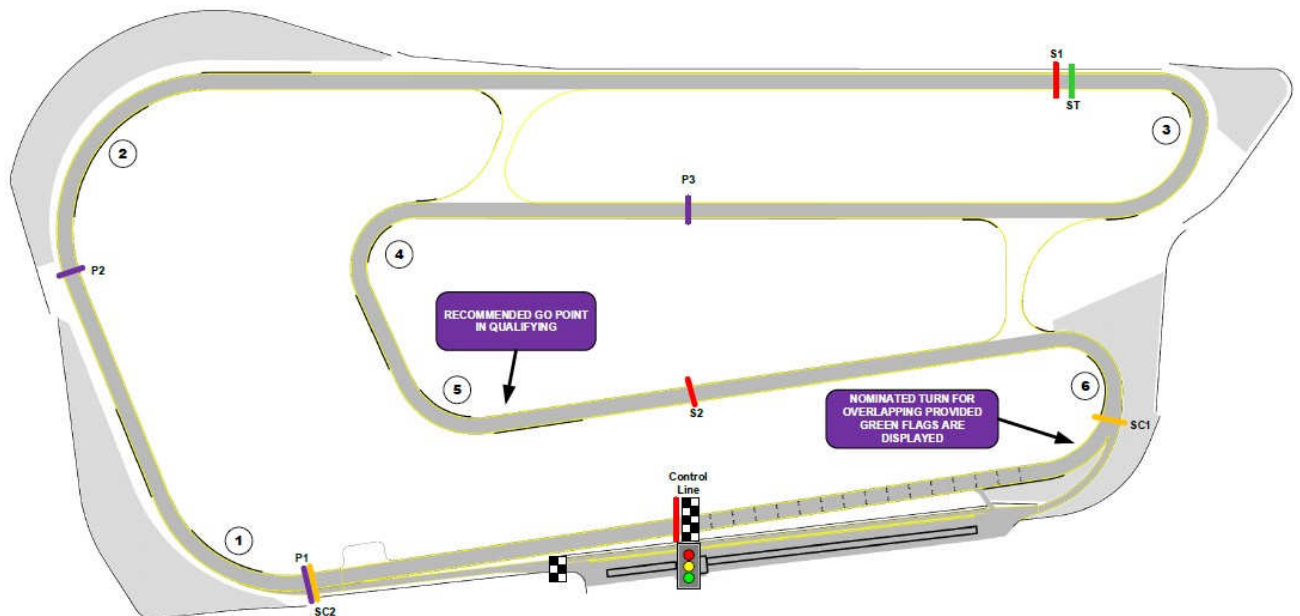
2025 miBike AUSTRALIAN SUPERBIKE CHAMPIONSHIP

ROUND 5 – QUEENSLAND RACEWAY

TIMING BULLETIN

Intermediate/sector timing

Two intermediate timing points will be used to create three timing sectors. Note that the timing intermediate points are at different locations to the standalone ASBK round in April. In particular, note that it is likely that the speed trap will be in the braking area into turn 3. The split times and speed will be shown on the Race Display screen, Computime live internet timing, and in printed reports. Refer to the map below for approximate locations:



Timing Transponder collection and deposits

Transponders will be available for collection **at riders briefing** on FRIDAY morning at 7:15am.

Transponder brackets

Transponder mounting brackets are available for sale for **\$12 each** (GST incl) – EFTPOS and credit card ONLY – NO CASH.

Timing transponder responsibility and return

The competitor acknowledges in participating in the event that failure to return the transponder within 30 minutes of the conclusion of the event may result in additional costs being incurred by the competitor. Further, if the transponder is damaged or lost, the competitor will be liable for repair or replacement costs.

Timing transponder mounting

It is your responsibility to ensure that timing transponders are properly mounted for all sessions (including practices and warm-ups). Instructions for the mounting of the transponder, can be provided when collecting the transponder where. Competitors found not to have transponders properly mounted, may be black-flagged from the session or have times excluded after the end of the session. Computime's back-up procedures ensure that accurate times are recorded if any competitor is found to have a faulty timing transponder.

Television live timing

Computime's Race Display will be available on a separate channel on the in-house television system at the event. If you have access to a television at the event, change the channel to receive the normal Computime timing display. Otherwise the normal car timing screen will also provide live timing for the Superbike class.

Circuit vision will also be available throughout the weekend on a separate channel.

Computime website for live timing and results

Computime's website will be available for competitors with laptops, tablets, and smartphones. The intranet site features:

- All results from the meeting (only minutes after each session is completed).
- LIVE TIMING (for the session currently in progress).
- Pit board display showing extended information for a selected rider.

Follow the links from www.computime.com.au.

Local wireless intranet site

Computime's local intranet site will **NOT** be set-up this this weekend. To access live timing on your smart device or laptop, utilise our internet-based timing (refer below)

Jump start cameras

To ensure consistency and accuracy in the assessment of potential jumped starts, it is proposed that Computime's jump start camera system will be set-up. This will be subject to final ratification by Motorcycling Australia and the event organisers. This system includes simultaneously recording cameras on each grid row and the start light. Any movement at the time the red light is extinguished will result in the implementation of a penalty.



Scott Laing ☺
Computime Race Timing Systems
Chief Timekeeper

Contacts:
scott@computime.com.au
Mobile – 0418 17 13 17